



# Te Awa

## TERM 3

### EVENTS

- Week 3 in-class speech presentations (dates vary by hub - will be communicated)
- Week 4 Friday 15 August speech finals - times TBC
- Move-athon 26 July - 16 August

### CURRICULUM

Our inquiry topics are “Our Future Our Challenges”, “Identity” and “Conflict and Cooperation”. We explore these throughout the different curriculum areas. In maths we will think about our future by designing a sustainable 3D city (geometry and measurement learning). We will learn some NZ history and identity in Te Ao Māori. We will think about conflict and cooperation through PE team games.

Our writing and drama focus this term will be on narratives and Māori stories.

### STATIONERY

By this time of the year, many of our tamariki have some stationery finished or missing. Please ask your child if they need pens, pencils, a ruler or glue.

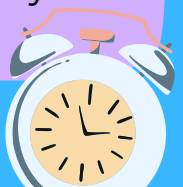


### SPORT

- MPSSA netball boys and girls Monday 5 August
- MPSSA girls football week 4 Wednesday 14 August
- Sports camp week 5 19-23 August
- Jump Jam workshop Tuesday 27 August
- Jump Jam competition Saturday 31 August
- MPSSA cross country Monday week 7 2 September
- MPSSA Basketball boys and girls week 10 Wednesday 5 September

### EDUCATION PERFECT

We use EP during class for follow up activities as well as for home learning. Teachers can use EP tasks to aid in their planning as well so it is very valuable! We hope everyone is able to sign up soon by paying on Hero.



Things are going to look a little different in Te Awa this term in terms of how we work collaboratively. We will be moving from cross-hub teaching to teaching within our hubs. The reason for this is to better manage the time that we have to dedicate to the core curriculum areas. The teachers within each hub will plan collaboratively to target the maths and reading needs of the tamariki in their hubs, but will continue communicating across the team to ensure all the children are following the same learning themes.

PE will now be on a Wednesday and will be taught by Whaea Kristie, Mrs Ward and Mrs Swami.

Te Ao Maori will also be taught on a Wednesday. This will be led by Whaea Nikki, Mrs B and Mrs Crane. Teachers will teach students from other hubs in order to continue to build relationships between the teachers and students across the team.

We welcome Whaea Monique who will teach Drama/Literacy during our old PE times, and Mrs Swami who will be in Whaea Braxton's kaitiaki on a Wednesday and Mrs Ward's kaitiaki on a Friday.



**MRS SWAMI**



**WHAEA MONIQUE**

