

Kia Ora, Kia Orana, Malo e Lelei, Fakaalofa Lahi Atu, Talofa Lava, Nǐ hǎo, Salut, Namaste, Bonjour, Bula Vinaka, Guten Tag, Goeie Dag, Shalom, Cześć, Hello, Cìào, おはよう (Ohayoou), 안녕 Ahn Nyeong, Olá, Privet!, Xin Chào, Salam, Goedendag, Chom Reap Sour, ស្អស្អ Suosdei, Ayubowan, Ɛnléó

Welcome to 2025! Welcome back to all our returning students and whanau and a special welcome to our many new students and whanau. At the end of 2024 and over the last 2 weeks I've met with many of our new students and their whanau and I've loved getting to know you all. I also want to welcome back our returning staff and our new team members.

2025 sees a new curriculum in maths for Year 0-8 and English for Year 0-6 being rolled out across the country. We want to make sure that as we are learning about the new curriculum we are sharing this information with you, our community. Each newsletter will have a 'curriculum' section and we expect to also be offering some community information sessions at school over the year. See the following page for our first part, giving an update on how we are upskilling our teachers to learn about and understand these new curriculum areas.

Make sure you have the date for our annual school picnic in your diary. It's a great chance to come along and mix and mingle with the community as well as have a picnic or buy some kai from the food trucks. The most important part of our school picnic are the team talks in the hall. Each team will introduce themselves, talk about how things work in their team and provide any information pertinent to the team, the learning and your children this year. Looking forward to seeing you on Thursday 20th February!

Last week our teachers had a busy week of learning and preparation. We came together with other schools in our Alfriston Kahui Ako (group of schools) for a 1 day conference, with keynote addresses and workshops on a range of things including AI, Te Tiriti of Waitangi, maths teaching and learning and mental performance. On our days at our school we worked on curriculum and Te Ao Māori as well as going through all those setting up for the year admin and preparation.

This year we are rolling out Mitey and our coaches came in to support teachers with their planning for this. Mitey, from the Dr John Kirwan Foundation, is a New Zealand developed and researched approach to mental health education. For more information [see here](#). Over the year we look forward to sharing our Mitey learning with you so you can reinforce and support the learning at home as we work together to educate our tamariki on their mental health and how to look after it.

We have had a positive and settled start to the year, it's been a great week here!

Ngā mihi, nā

Julie Cowan
Principal



WHAT'S INSIDE?

- Curriculum Update
- School Picnic
- Staff and Teams
- Team FB Pages
- Safety at Pick Up/Drop Off
- Student User Agreement
- Mihi Whakatau

**“Na te puna ko te awa. Na te awa ko te moana. Ka rere te moana, he ara ki te ao.”
Reremoana Kura”**

*From the spring comes the river. From the river comes the sea. The sea flows as a pathway to the world.”
Reremoana School.*

Curriculum Update

Each newsletter our 'curriculum' section will have information about the new curriculum so we can take our whānau on the journey with us.

What we are doing to implement the new English and Maths curricula?

We have new English (for Years 0-6) and Maths (for Years 0-8) curricula this year. It's important to understand that unlike previous curriculum roll outs where teachers had time to learn the content well in advance to having to implement it, this is not the case of the new English and Maths curricula. Teachers and leaders only got access to these English and Mathematics documents at the end of 2024 after several different draft versions were developed during that year.

Lots of things are similar as previous curricula but there are a large number of changes for teachers to become familiar with.

So what are we doing to upskill our teachers and support them to implement the new content and expectations?

MATHEMATICS

The Ministry of Education is providing some maths resources including teacher guides and student work books in maths that can be used as part of our maths teaching and learning programmes. We note that the providers of the resources have had to work at extraordinary speed to get the resources ready in time and they are now working on the teacher professional learning development to go with them. On one of our teacher only days prior to school starting we all watched an introductory webinar on this resource and when further training is available we will take that up so our teachers can use these effectively.

The Ministry of Education is also providing 4 days of maths curriculum professional learning over the next 2 years. Day 1 of this professional learning is Friday 28 March (a staff only day) and day 2 will be in Term 2.

As a school we are also funding some further maths professional development over the next 3 years with our Alfriston Kahui Ako (group of schools) as we recognise that the ministry provided resources and 4 days professional learning will not be enough to truly provide the depth of professional knowledge and teaching skills we want our teachers to have to feel confident and for our students to get the best education possible. We are also very lucky to have the expertise of Lisa Thomson (Mrs T) who prior to joining us at Reremoana School was a math facilitator at Massey University.

ENGLISH

The new curriculum is strongly focused on using a structured literacy approach. We have been a BSLA (Better Start Literacy Approach) school, working with the University of Canterbury for the past 3 year in our junior team (Year 0-3). We are excited to have been accepted to be a part of the trial of the Year 4-6 version of BSLA. This will be the focus of our Te Awa team.

There is more to the English curriculum than what is covered with BSLA and we spent time at our teacher only days prior to school starting to familiarise ourselves with the English curriculum area and will continue to unpack this area through our staff meetings.

ASSESSMENT & REPORTING

Along with BSLA comes a suite of assessment tools that our junior teachers are familiar with and will continue to use. We will continue to use many of the assessment tools such as e-Asttle that we have used previously. We don't yet have the information on how these tools map to or align with the new curriculum expectations for each year group nor any information on how reporting to parents will look. When we get this information we will work urgently with HERO (our student management system) to develop our reporting templates.

UPDATING AND INFORMING OUR COMMUNITY

We want to make sure that as we are learning about the new curriculum we are sharing this information with you, our community. Each newsletter will have a 'curriculum' section and we expect to also be offering some community information sessions at school over the year.

Our next newsletter will contain further information on the changes and how the new curriculum compares to the old one.

Staff and Teams

In Term 4 we shared where and who our staff and teams are. For new families and those who would like a reminder, here is the overview again. We have also included the names the teachers have chosen to be called by students.



Te Puna Iti – New Entrant/Y1 – Sarah Hutchinson (Te Puna Team Leader; Hauora) – Whaea Sarah
Te Puna 1 – Y1 – Jazz Kaur – Whaea Jazz
Te Puna 1 – Y2/3 – Katja Sixt – Miss S
Te Puna 1 – Y2/3 – Shannon Gugich-McKenzie – Whaea Shannon
Te Puna 2 – Y1/2 – Jasmine Kaur – Whaea Jasmine
Te Puna 2 – Y2/3 – Krysten Schroeder (Te Puna Team Leader; Ako) – Whaea Krysten
Te Puna 2 – Y2/3 – Alisha Hunter – Whaea Alisha



Te Awa 1 – Y4 – Braxton Murray – Whaea Braxton
Te Awa 1 – Y4/5 – Courtney White (Acting Team Leader Hauora, with Lynn Fothergill) – Miss White
Te Awa 2 – Y 4/5 – Kristie Knauf (Te Awa Team Leader; Ako) – Whaea Kristie
Te Awa 2 – Y5/6 – Brooke Thomas* – Whaea Brooke
Te Awa 3 – Y5/6 – Melissa Ward – Mrs Ward
Te Awa 3 – Y6 – Nikki Vaai – Whaea Nikki

*Brooke Thomas is with us for 6 months until Mrs Nathana Wickman returns from parental leave to teach this kaitiaki. Nathana will then also take over as Hauora Team Leader. Mrs Wickman is teaching in Te Awa 2 on Tuesdays in Terms 1 and 2..



Te Moana – Y 7/8 – Lisa Thomson (Acting Team Leader, with Marama O'Reilly) – Mrs T
Te Moana – Y 7/8 – Del Young – Ms Young
Te Moana – Y 7/8 – Jason Bailey – Matua Jason

Release teachers – Mrs Katie Jenkins Martin (Mrs J), Mrs Prem Swami (Mrs Swami), Mrs Gloria Cowan (Mrs Cowan) Mrs Sharren Bailey (Mrs Bailey).
PE specialist release – Jorien Fourie – Miss Fourie

Student Teachers

We are currently hosting 4 student teachers at Reremoana, all from Auckland University. Sanjina Devi (Whaea Jina) who is with Whaea Sarah in Te Puna Iti, and Chris Broughton (Coach Chris) who is with Mrs T in Te Moana, are graduate students. We also have Tori Kolose (Miss Kolose) with Miss White, and Ilaisaane Taufalele (Whaea Saane) with Whaea Shannon, who are both third year students. Our students are with us for three weeks, and then return later in the year. Haere mai!

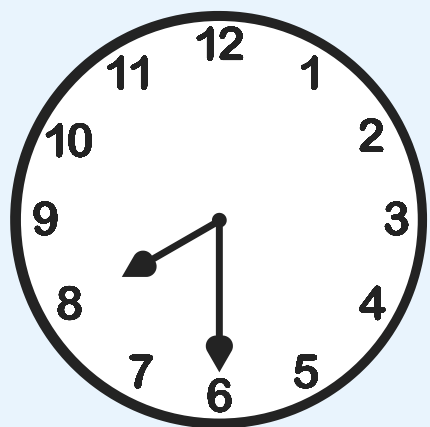
2025 Student User Agreement

This week all families of students in Te Awa and Te Moana will have received the 2025 Student User agreement for Digital Tools and Technologies via HERO. As all students will use a device at school at some stage during the year - be it their own or a school device - all are required to respond to the survey on HERO to confirm agreement. Until this is done, students will not be able to use a device at school. Please check your inbox/HERO app if you have not seen this and/or contact your child's kaitiaki teacher.

Arriving at School/Signing In and Out

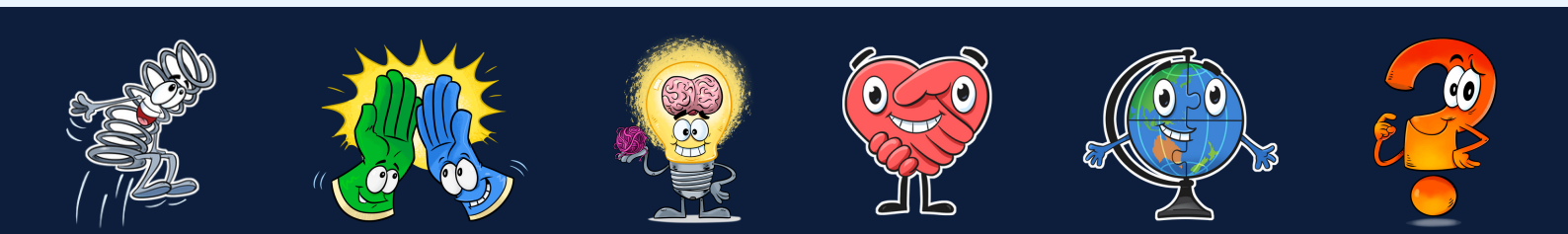
A reminder please that children are not to arrive at school before 8am unless they are enrolled in before school care. Children who arrive before 8:30am are to wait outside out school library.

Please note: before 8:30am teachers are involved in meetings and preparation and are not available for supervision. Any children arriving after the music has played at 9 are to sign in at the front office and uplift a late pass. If you wish to uplift your child during the school day, please report in person to the office and sign them out. Students are not permitted to sign themselves out.



Footwear on the Turf

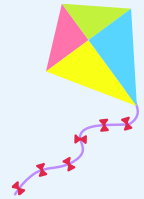
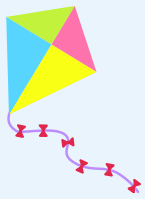
Because our turf can get really hot, it is a requirement for students to wear footwear when playing there. For Te Awa and Te Moana students, please ensure your children wear appropriate footwear for PE on their PE days (not cros or slides).



Be Resilient.....Be Collaborative.....Be Creative.....Be Respectful.....Be A Contributor.....Be A Thinker

Reremoana School Picnic

20TH FEBRUARY
5.30-8PM



*Team Info Presentations
Bring a picnic or purchase from food trucks.*



School Picnic and Team Talks

Please join us for our school picnic in Week 3! We invite you to join us on the field on **Thursday 20 February, from 5:30pm – 8pm**

We invite and encourage whānau to either pack a picnic or purchase from one of the food trucks we are organising. So far we have food trucks selling coffee, dumplings, donuts and ice cream. Most of the food sellers will have eftpos but having some cash might be advisable. We also hope to have an inflatable course, ferris wheel and train that tickets can be purchased for. Food trucks will be around the central courtyard with rides/activities on the field.

We hope this will be an opportunity for families to come together, and to informally meet your child's kaitiaki teacher if you have not already done so. The playgrounds will be open, with the understanding that parents and whānau members (not staff) are responsible for the supervision and safety of their own children.

In conjunction with the picnic, each team of teachers will be giving a brief 15 minute talk in the hall, at the times scheduled below. Team Talks will outline how things work in each team, with topics which may include learning, home learning, communication, expectations and Term 1 events.

Teams are keen to know what questions you have so these can be addressed in their talk. Please enter your questions via [this google form](#).

Times for the Team Talks are as follows:

- 6:00 p.m. – Te Puna
- 6:30 p.m. – Te Awa
- 7:00 p.m. – Te Moana

Please note – all children are to attend with an adult family member. This includes any ex students.

Team Facebook Pages

We invite you to join the relevant Facebook groups for your child/ren's teams. This is a place where we share and celebrate learning and reminders, relevant to your child's team. Groups are closed and restricted to adult family members of current students only. Membership questions must be answered before membership is approved.

Te Puna Years 1-3

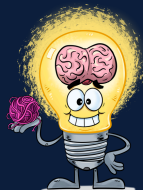
<https://www.facebook.com/groups/rstepuna2025>

Te Awa Years 4-6

<https://www.facebook.com/groups/rsteawa2025>

Te Moana Years 7-8

<https://www.facebook.com/groups/rstemoana2025>



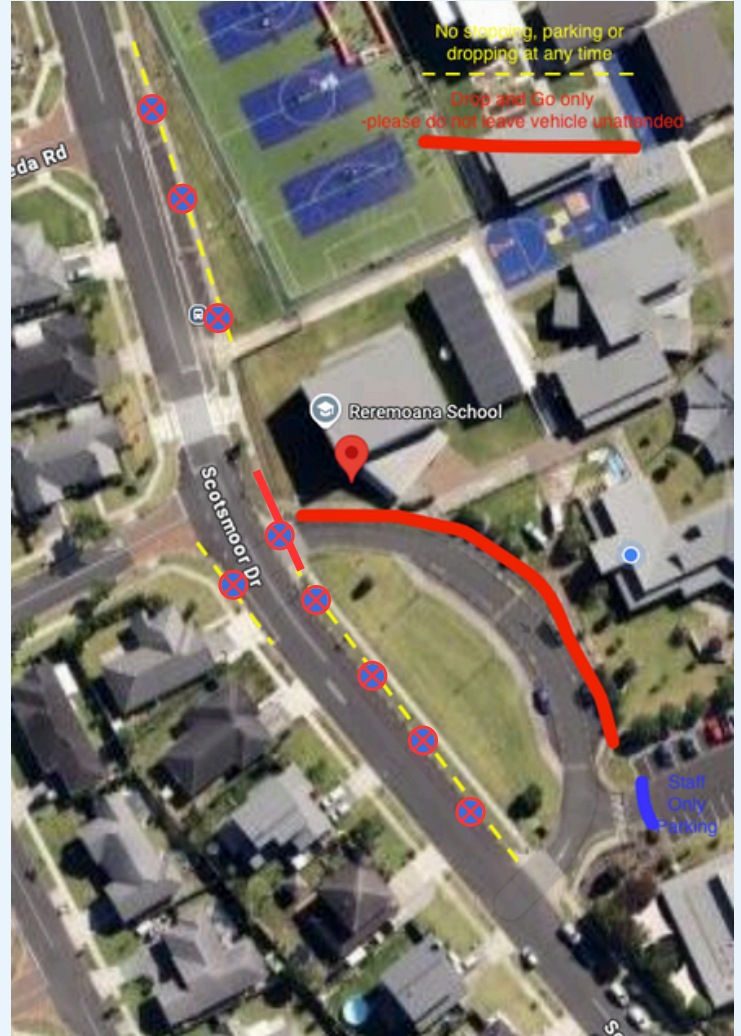
Safety at Pick Up and Drop Off

For new families and anyone else who may need a reminder, there are certain areas around the school that must be kept clear. These are indicated in the map below. Please move on respectfully if you are asked by a staff member not to park or stop in these areas.:

- The bus stop by the turf
- The yellow lines along the front of the school
- In front of the gates to the drop zone when these are locked in the afternoon
- Any residential driveway

Also please be reminded:

- Our drop zone is open mornings only.
- Please do not park and leave your vehicle on the school side of the drop zone.
- The car park is for staff cars only
- Park on neighbouring streets and use the crossing if you wish to come into your child's class in the morning



Our 2025 Road Safety Team was trained this week. They are still developing their confidence so please be patient.

Apart from it being illegal, keeping the yellow lines clear is imperative for the safety of our road patrollers as their line of sight is often impinged by vehicles not following the law.

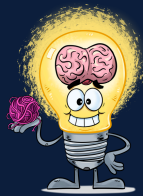


Mihi Whakatau

A mihi whakatau refers to a process of welcoming and settling visitors in a respectful and peaceful way. It is a way to acknowledge manuhiri (visitors), establish connections and create a sense of belonging.

We held a mihi whakatau on Wednesday to welcome our new whānau. Some may be wondering why a mihi whakatau and not a pōwhiri. While both are forms of welcome, a pōwhiri follows formal kawa including karanga by kaikaranga. Since we were not using kaikaranga, it was not correct to call our welcome a pōwhiri.

A mihi whakatau was a less formal but still meaningful way to uphold manaakitanga and whanaungatanga.



Be Resilient.....Be Collaborative.....Be Creative.....Be Respectful.....Be A Contributor.....Be A Thinker

Piano Lessons with Nick Dow in 2025

Looking for a fun, patient, and encouraging piano teacher? I specialize in teaching beginner piano with a focus on creativity and enjoyment. With a strong background in jazz and improvisation, I love helping students not only learn the fundamentals but also explore their own musical ideas. Whether you're just starting out or want to experiment with writing your own songs, I provide a supportive environment to help your child grow as a musician. Lessons are \$35 per half-hour, once a week during school time. If you're interested, feel free to reach out at nickdownmusicnz@gmail.com.



Office Messages

IMPORTANT REMINDER!

KINDO

Have you updated your child's hub? To ensure that your child receives any orders - please ensure your child's 2025 hub has been updated.

Office

IMPORTANT REMINDER!

**3PM COLLECTION
ARE YOU LATE? HAVE PLANS CHANGED?**

Teach your child that if you are not at your meeting spot to come to the office for instruction.

Any messages for your child please email them to office@reremoana.school.nz and we will pass them on.

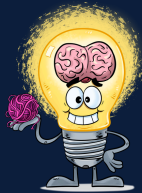


Be Resilient.....Be Collaborative.....Be Creative.....Be Respectful.....Be A Contributor.....Be A Thinker

Term 1 Important Dates

Updated Weekly

	Monday	Tuesday	Wednesday	Thursday	Friday
Week 2 10th-14th Feb					
Week 3 17th-21st Feb				School Picnic	
Week 4 24th-28th Feb			MPSSA Swimming		TEACHER ONLY DAY CCSA Swimming
Week 5 3rd-7th Mar		Whānau Connect (more info to come)	Whānau Connect (more info to come)		
Week 6 10th-14th Mar			MPSSA Cricket		Counties Swimming
Week 7 17th-21st Mar	CCSA Cricket		MPSSA Rippla Rugby		
Week 8 24th-28th Mar		Counties Cricket			Reremoana Orienteering
Week 9 31st - 4th Apr		CCSA Football			
Week 10 7th-11th Apr		Counties Boys Football			



MANUREWA MUSIC SCHOOL

Manurewa Music School is now taking enrolments for 2025 Music Lessons



ANNUAL FEE \$50

Lessons are held at
**Greenmeadows
Intermediate School**

29 Greenmeadows Ave, Manurewa

**Thursday Lessons
Guitar & Keyboard**

🕒 3.30 pm - 5.30 pm

**Saturday Lessons
Guitar & Keyboard**

🕒 8.30 am - 12.30 pm

Instrument hireage fee
\$30 for the year

Students are able to hire instruments for the year for a very small fee. We have guitars available.

Follow [this link](#) to enrol.
Enrolment is only complete once the school has received payment of the annual fee.

Payment
Please have your child's name as the reference 03-0355-0150067-00

For more information, email Ange Petera at apetera@greenmeadows.school.nz or phone the school 267 6255

Jellicoe Park Tennis

Tennis coaching for juniors starts Friday 31st January 2025 - April 2025. We welcome all ages and skill levels.

All queries please phone Peggy on 021 201 8824 or email us on jellicoeparktennis@hotmail.com



ENROL NOW

LEGO® AFTER SCHOOL STEAM CLASSES

Bricks 4 Kidz After School STEAM programmes are essential in equipping students with future-ready skills and a strong educational foundation which empowers them to excel academically and thrive in an AI-driven, technology-focused world.

GAIN FUTURE READY SKILLS

**STEAM
EDUCATION**
HANDS-ON
STEAM LEARNING

**PROBLEM
SOLVING**

**TECHNOLOGY &
ARTIFICIAL
INTELLIGENCE**

**CREATIVITY &
INNOVATION**

**EMOTIONAL
INTELLIGENCE &
SOCIAL SKILLS**

**IMAGINATION &
SELF EXPRESSION**

EMPOWERING THE NEXT GENERATION OF INNOVATORS & PROBLEM SOLVERS

**Junior
Robotics
(Year 0-4)**

Join us in Term 1 for Harnessing Energy, where young minds become environmental stewards! Through hands-on LEGO building, kids will explore green energy solutions like bio, wind, hydro, and solar power, learning how these natural forces can sustainably power our world.

WEDNESDAYS
Start date: 12th February
3:00pm - 4:00pm
Location: Te Awa 1
Lesson Cost: \$32

**Junior
Engerring
(Year 0-6)**

Learn real-world AI concepts like robotics, automation and machine learning. Build upon robotics and programming to connect creative play with future-focused technology and develop future-ready skills.

WEDNESDAYS
Start date: 12th February
3:00pm - 4:00pm
Location: Te Awa 1
Lesson Cost: \$28

**Spike Prime
Robotics
(Year 4 up)**

This dynamic program invites young learners to discover the principles that make things move through hands-on exploration, children will uncover the secrets of forces like gravity, friction, and momentum. Through interactive challenges and playful learning, participants will develop a foundational understanding of forces and motion—one build at a time!

WEDNESDAYS
Start date: 12th February
3:00pm - 4:30pm
Location: Te Awa 1
Lesson Cost: \$40

www.bricks4kidz.co.nz/southaukland | 022 394 1609 | southaukland@bricks4kidz.co.nz